



Welcome to Your New Blue.

Say goodbye to slow zones and outdated stations. Say hello to Your New Blue—a four-year initiative to improve the O'Hare Branch of the Blue Line, from Grand to O'Hare. The plan will:

- » Rehabilitate stations
- » Repair tracks
- » Upgrade signal and power systems
- » Provide faster commutes
- » Deliver more reliable service
- » Maintain a more welcoming environment

A New Blue for You

On a typical weekday, more than 80,000 riders use stations along this part of the line, and Your New Blue will be the largest, comprehensive investment in the Blue Line since the O'Hare branch was first extended to the airport from Jefferson Park in 1983-84. The program will improve 13 stations, repair more than 18,600 feet of track, and upgrade track signals between Jefferson Park and O'Hare.

Announced in December by Mayor Rahm Emanuel and Governor Pat Quinn, the \$492 million program is funded through local, state and federal sources, and is part of more than \$4 billion in transit modernization projects announced by Mayor Emanuel since 2011.



Station Improvements

Thirteen stations—from Grand to Cumberland—will receive improvements as part of Your New Blue. Many of the station structures and finishes are original, dating back in some cases more than 100 years:

Grand (1951)
stairway, mezzanine and platform improvements

Chicago (1951)
stairway, mezzanine and platform improvements

Division (1951)
stairway, mezzanine and platform improvements

Damen (1895)
complete rehab of station house, platform and entrance plaza

Western (rebuilt 2000)
entrance plaza, station house improvements; public art installation

California (1895)
complete rehab of station house, platform and entrance plaza

Logan Square (1970)
station and entrance upgrades

Addison (1970)
new elevator, making the station fully accessible

Jefferson Park (1970)
station, platform and bus terminal improvements

Irving Park through Cumberland (1970-1983)
station and platform repairs and improvements



Track and Subway Improvements

Your New Blue will make improvements to three sections of Blue Line tracks:

Milwaukee Elevated Tracks
from south of Logan Square to south of Damen. Opened in 1895; structure is original. — replace wooden ties, tie plates and fasteners, footwalks

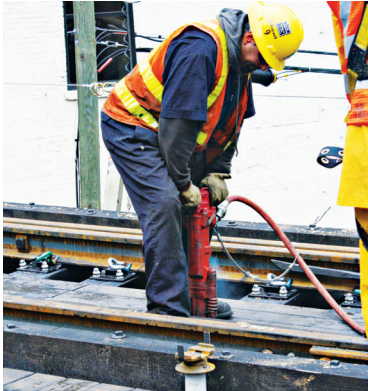
Dearborn Subway
from Division to Clinton. Opened 1951. — repair tube/tunnel, improve platforms, replace signage

Kimball Subway
from just south of Logan Square to north of Belmont. Opened 1970. — install water-management system, improve platforms, replace signage



Signal and Power Upgrades

Track signals and electrical power infrastructure are critical components to efficient and safe rail operations. Your New Blue will make a number of improvements to those systems that will enhance reliability and system safety.



Milwaukee Elevated Track Improvements

BEGINS: March 21

TRACK: Elevated track structure from just north of the California station to just south of the Logan Square station

IMPROVEMENTS: Replace wooden rail ties, tie plates and fasteners (which hold tracks to ties) and footwalks

WHEN: 10 selected weekends from March through August
(see below for specific details)

IMPACT: During the weekend work, Blue Line trains will not run between either the Logan Square and Western stations (7 weekends) or the Western and Damen stations (3 weekends)

ALTERNATE SERVICE:

- Free shuttle bus service between those stations with stops at stations in between
- Free transfers between shuttle bus and Blue Line rail service

Track Closure 1: Logan Square to Western

WHEN: Weekends of March 21, May 10, May 30, June 6, June 21, July 25, August 8

ALTERNATE SERVICE:

- Free shuttle bus service between Logan Square and Western stations
- Free transfers between shuttle bus and Blue Line rail service



Track Closure 2: Western to Damen

WHEN: Weekends of April 5, April 12, April 25

ALTERNATE SERVICE:

- Free shuttle bus service between Western and Damen stations and will also travel downtown to Clark/Lake
- Free transfers between shuttle bus and Blue Line rail service



Map Legend

- Blue Line and station
- Free transfer between rail lines
- Accessible station
- FREE bus shuttle
- Bus shuttle stop
- Free connection between train and bus shuttle

